

The Severn Campus
University of Worcester

Nicholas Hare **Architects**







The Vision

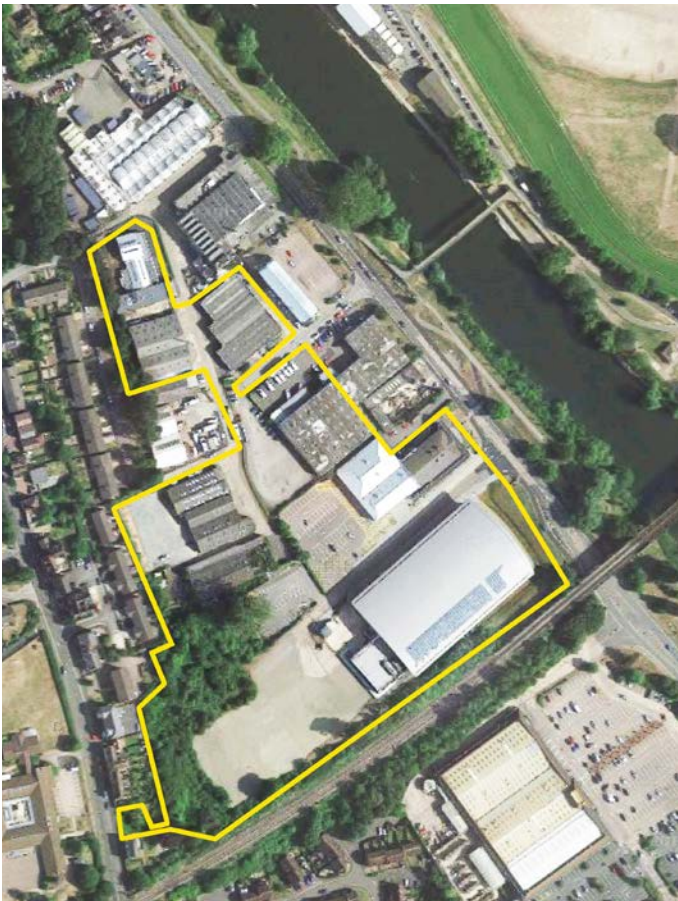
The University's intention is to create a new 'Severn Campus' which will be the home of the International Centre for Inclusive Sport, Physical Activity and Health. The first stage in this was the opening of the University of Worcester Arena in 2013. The Arena has proved enormously successful, being intensively used by members of the University and the wider public, and hosting a number of tournaments, including ones for international wheelchair sports.

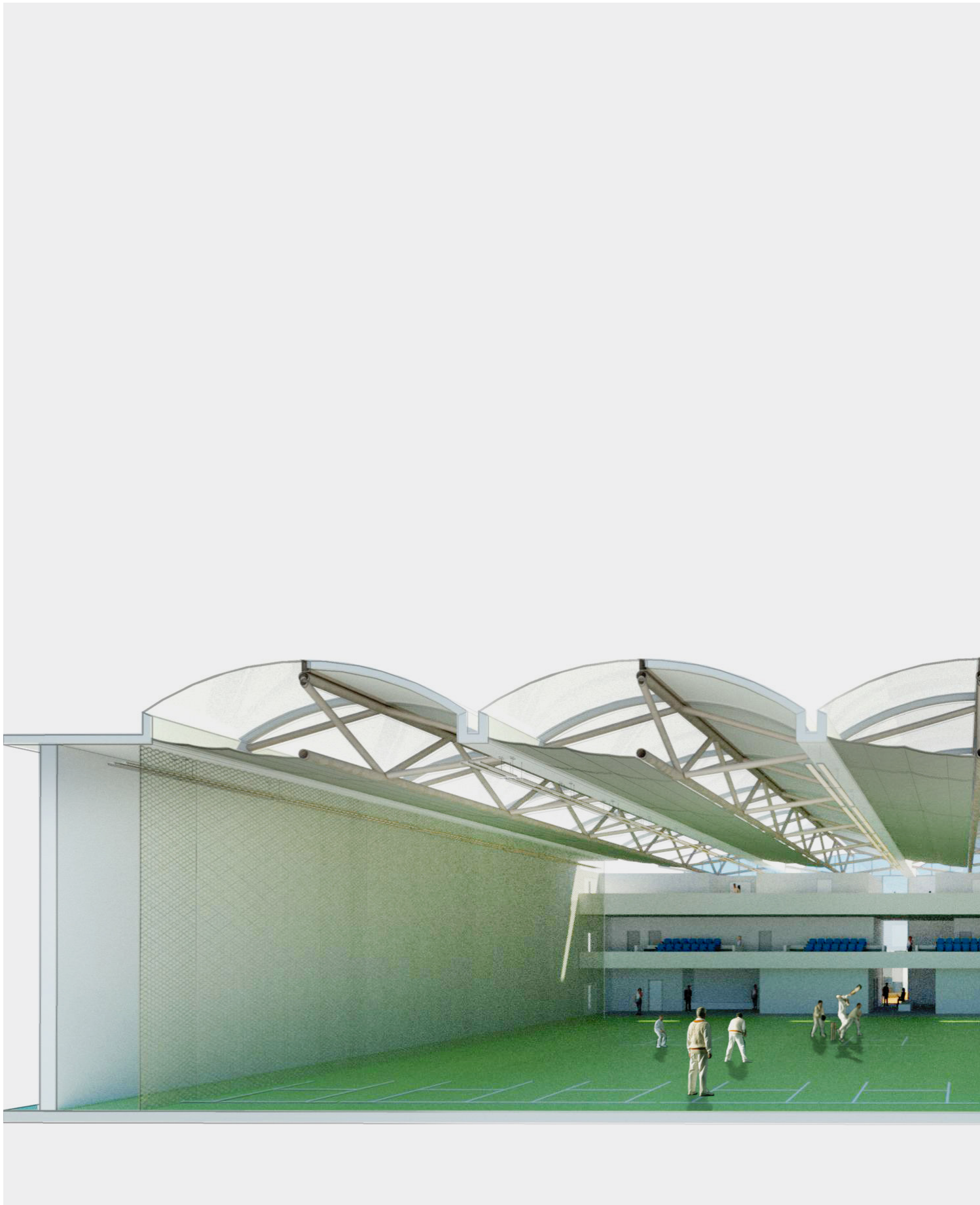
The Arena is located on a prominent site beside the River Severn and the main railway line viaduct, which crosses the river. The University has now acquired a number of brownfield sites on the west side of the Arena, which together offer the opportunity to add extensive new facilities and create a unified centre designed to be exemplary in its provisions for Inclusive Sport, Physical Activity and Health.



The site

The site is on the west bank of the river Severn, opposite the Worcester racecourse. Like the racecourse, it is subject to flooding, though a protection scheme is in place and so far it has proved effective. However, the existing Arena building was raised 1.8m above ground level, and the plan is to raise the new buildings by a further 1.7m, to allow for car parking underneath them. This offers the opportunity to establish links with the roads and paths on the west side of the site, which are above the slope on the western side of the site. The south side of the site is bounded by the railway embankment.

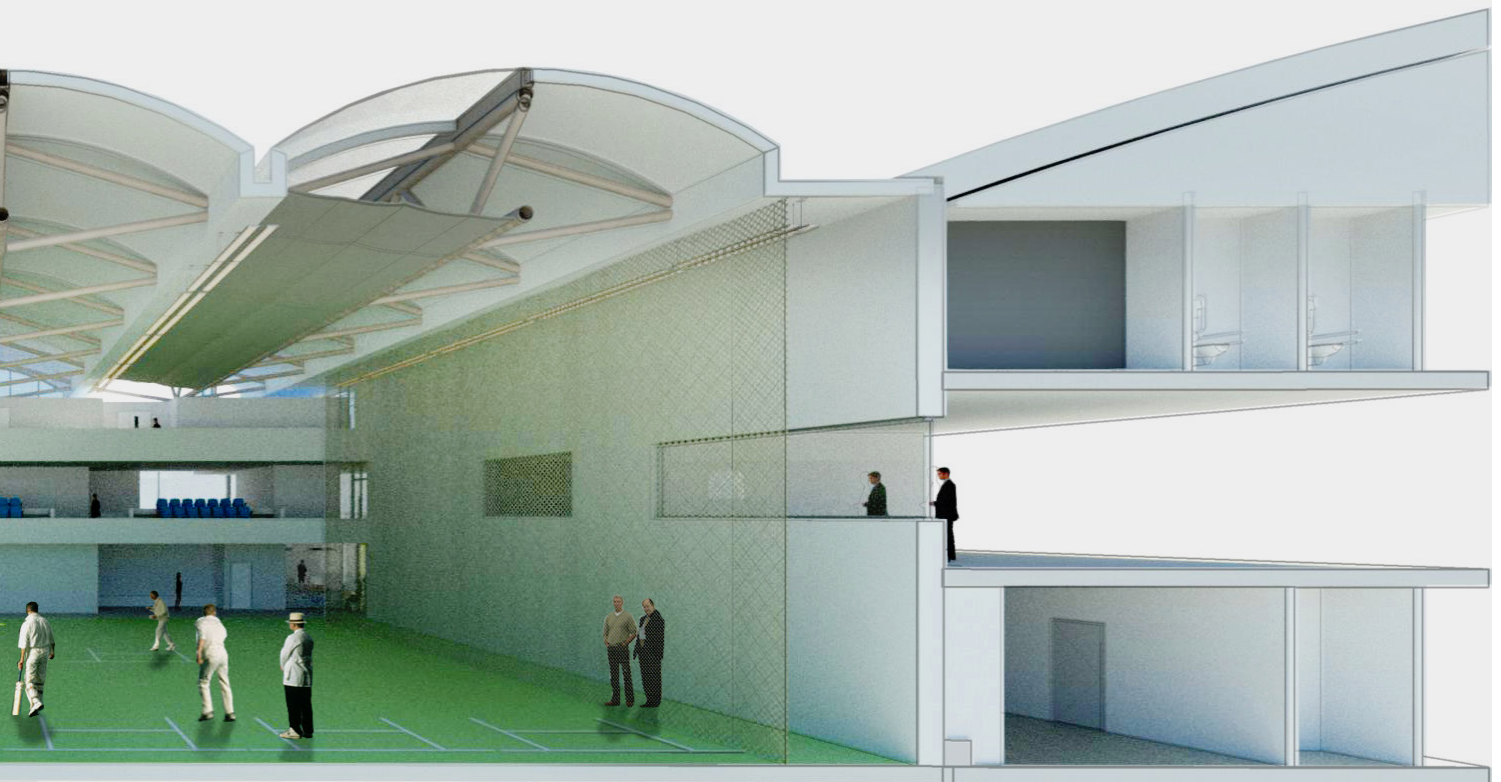




The Project

The Project consists essentially of three new buildings: the International Centre for Inclusive Cricket, a new Training Hall mainly for basketball and netball, and a new Health Hub containing therapeutic, educational and communal facilities. These are to be united as far as possible with each other and with the Arena to form a nexus for inclusive sport and health. In addition, the overall brief includes exploring the possibility of locating up to 300 car parking spaces on the site.

The University aims to maximise the development potential of the site, turning it into a vibrant new campus. The major higher educational work carried out on this new campus will be in the fields of health and sport science. The facilities will be highly inclusive by design and will provide outstanding opportunities for community as well as University use.





The Training Hall

The Arena

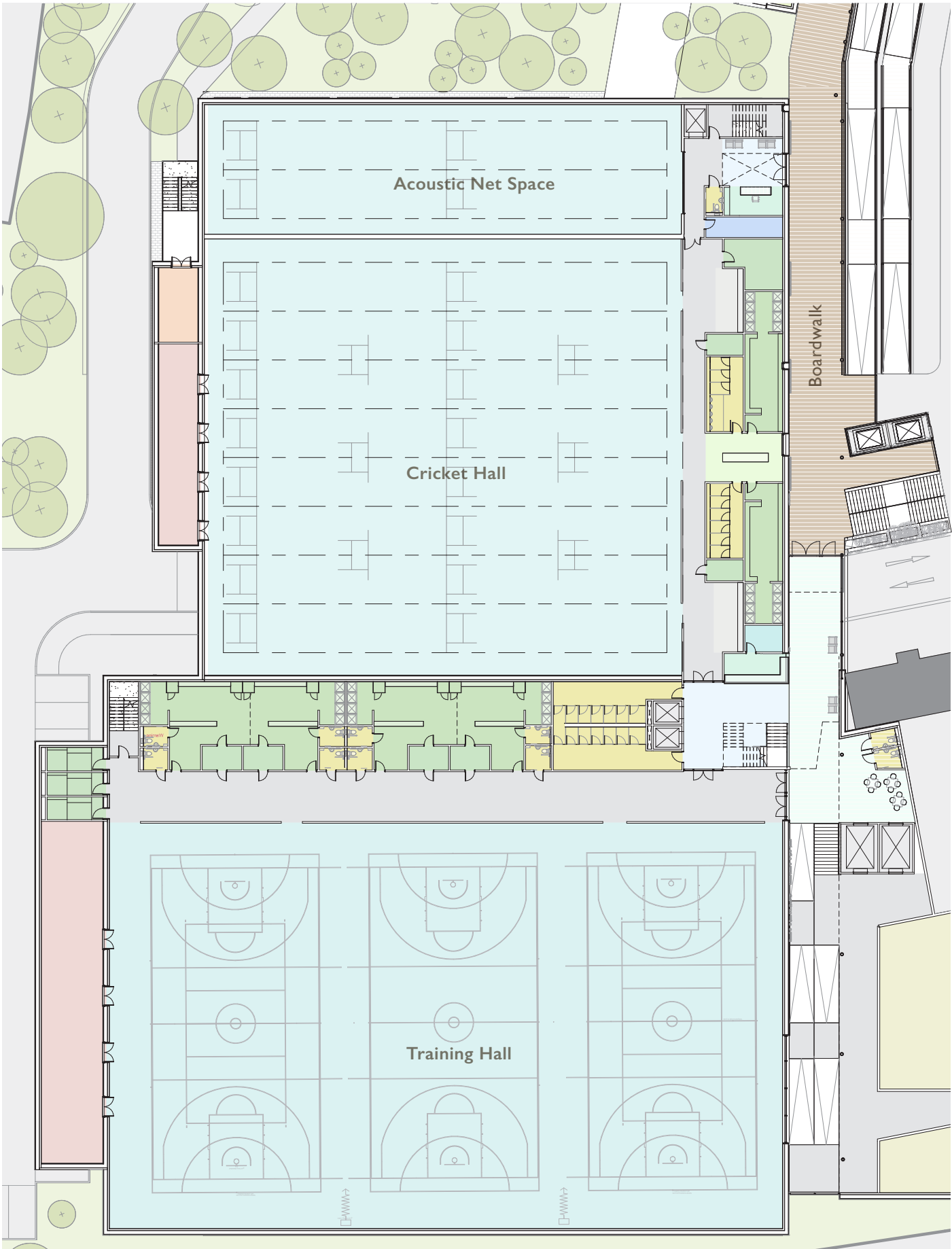
The Riverside Building



The masterplan proposal

The proposal is to range the three buildings along the west side of the site, thereby creating a central green space which will act as a focus for the whole campus. The three buildings are linked by a covered boardwalk that overlooks the central space.

The boardwalk is linked by a level path to the road on the west that leads to the University's St John's campus. Gentle ramps and glass lifts will link it to the central green. At its south end it is enclosed to form a glazed link between the Arena building and the Training Hall behind it.

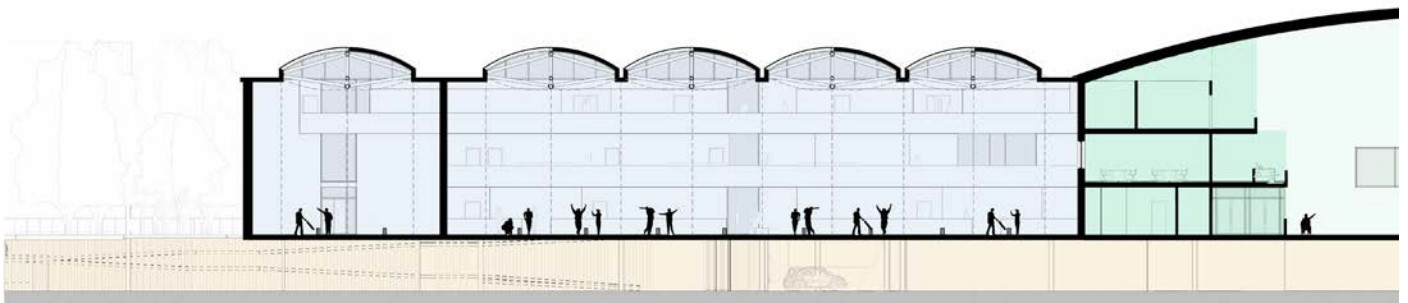


The Training Hall and the Cricket Centre

Both the Training Hall and the Cricket Centre are large volumes with three levels of support spaces along one side. The support spaces are largely changing rooms, meeting rooms, and viewing galleries. They meet in the glazed link where the shared reception is located.

The Training Hall is a multipurpose hall which accommodates three basketball courts, with specific provisions for wheelchair basketball. It requires no daylight, whereas the Cricket Centre requires excellent daylight. This will be provided by diffusing northlights, and the vaulted form is extruded to give character to the roof above the boardwalk.

The Cricket Centre will be exceptional both in the generosity of its dimensions and in its provision for blind cricket. Its main space will be divisible into ten 4.4m wide lanes, but will also be used as a whole for matches and fielding practice. In addition, there will be two acoustically separated lanes specifically for blind cricketers. This space will also be equipped for performance measurement, and one of the nets will be set up with the equipment of the biometrics laboratory.





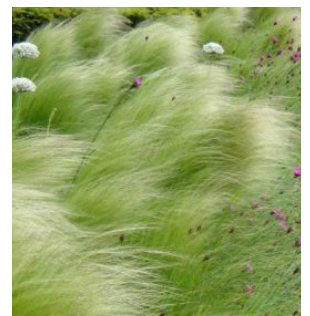
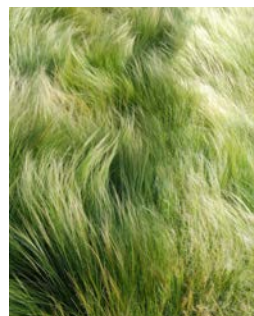
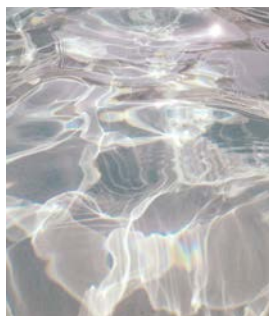
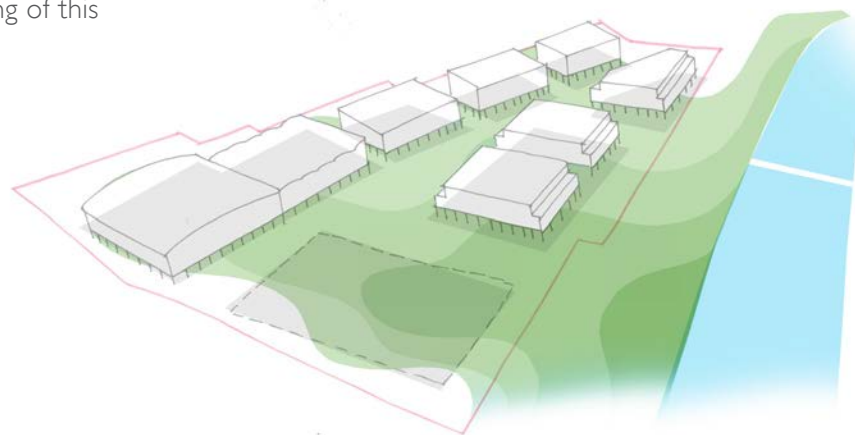
The Health Hub

The brief for the Health Hub includes general educational and therapeutic areas. In addition to its various functional roles, the building is intended to act as the social hub of the campus, and will include an easily accessible and generously sized café.

The building has three storeys above boardwalk level, making it about the same height as the other two buildings. It is arranged around an atrium facing the boardwalk, at the bottom of which is the café that will spill out onto the boardwalk.

Landscape

Fabrik Landscape Architects have created an imaginative landscape scheme intended to intensify the experience of walking on boardwalks. Extensive planting of long grasses will give a distinct character to the scheme and recall the movement of water in the wind. The central space will be planted with trees to complete the greening of this currently rather barren space.





Inclusive Design

The University aim is to provide a vibrant, inclusive and accessible new campus with outstanding opportunities for the local community as well as University use.

From the outset, the project team have embedded the following four principles as part of their design to ensure that all parts of the built environment:

- Can be used safely, easily and with dignity by all regardless of disability, age, gender, ethnicity or economic circumstances.
- Are convenient and welcoming with no disabling barriers, so everyone can use them independently without undue effort, separation or special treatment.
- Are flexible and responsive taking account of what different people say they need and want, so people can use them in different ways.
- Are realistic, offering more than one solution to help balance everyone's needs, recognising that one solution may not work for all.



Client:

University of Worcester

Landscape architects:
Fabrik

Infrastructure & Civil Engineering:
BuroHappold Engineering

Sustainability:
BuroHappold Engineering

Inclusive Design:
BuroHappold Engineering

Cost consultant:
Mace

Nicholas Hare **Architects**

3 Barnsbury Square London NI 1JL
020 7619 1670
info@nicholashare.co.uk