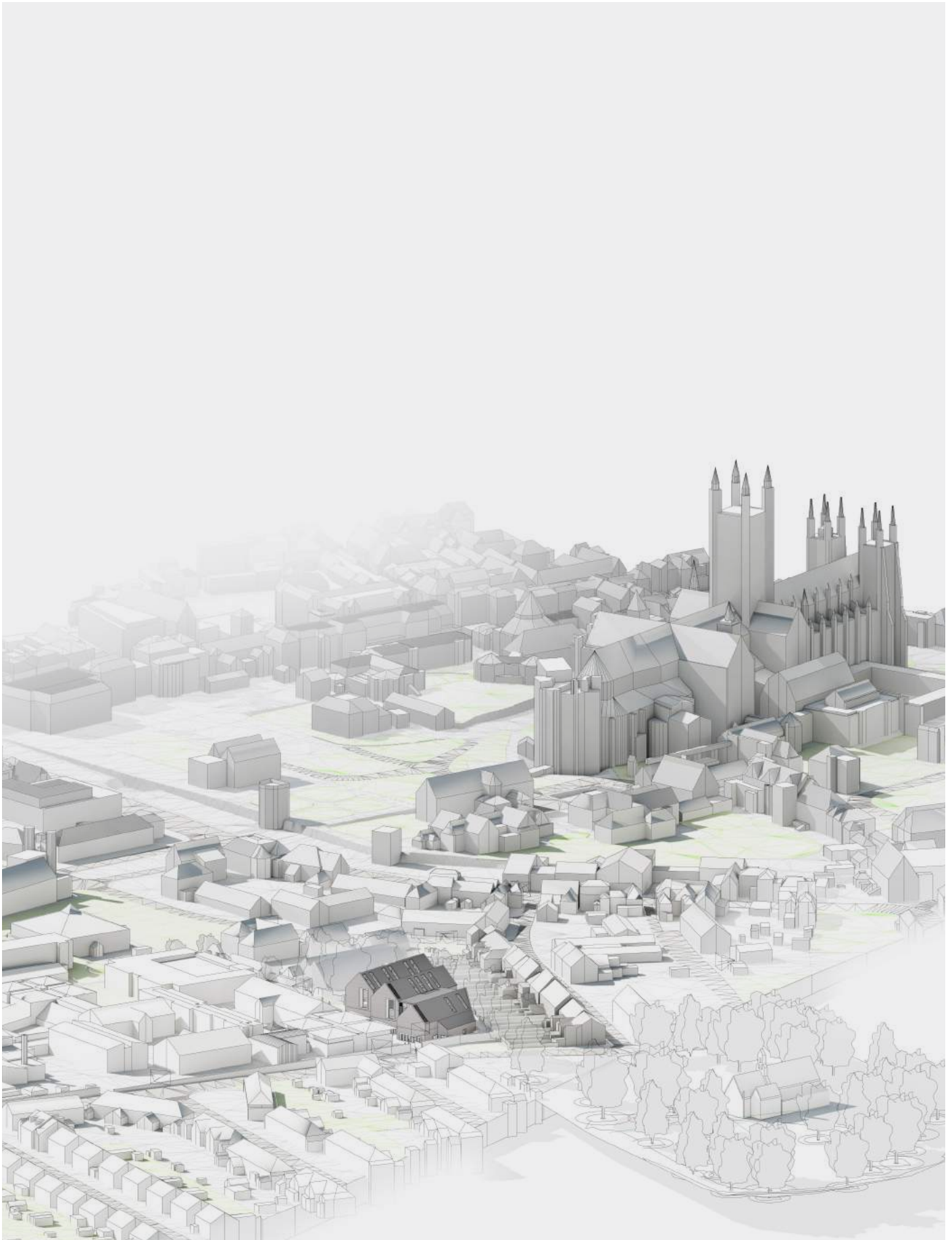


New Arts Building  
Canterbury Christ Church University

Nicholas Hare **Architects**







## North Holmes Campus

The new Arts Building responds to Canterbury Christ Church's significant estate development aims: to ensure the continued delivery of outstanding higher education and research into the future, and to safeguard the University's economic and social contribution to the region. The University is actively creating new courses that respond to the skills needed in the creative industries – a significant area of economic growth in the region.

Situated on the North Holmes Campus, the new Arts Building will strategically co-locate the University's new programmes in media and illustration together with relocated courses in photography, digital design and commercial music. The site, situated at the centre of a cluster of existing facilities for music, performing arts, media, film, radio and television, will enable the new Arts Building to become a shared hub for the activities of the School of Media, Art and Design and the School of Music and Performing Arts.







## A sense of place: heritage and context

The design of the new building reveres and responds to its setting within the buffer zone of the Canterbury World Heritage Site and the precinct of St Augustine's Abbey, a Scheduled Ancient Monument. The building will help illustrate the rich history of the World Heritage Site to students, staff and visitors through internal design features and the design of the external landscaping.

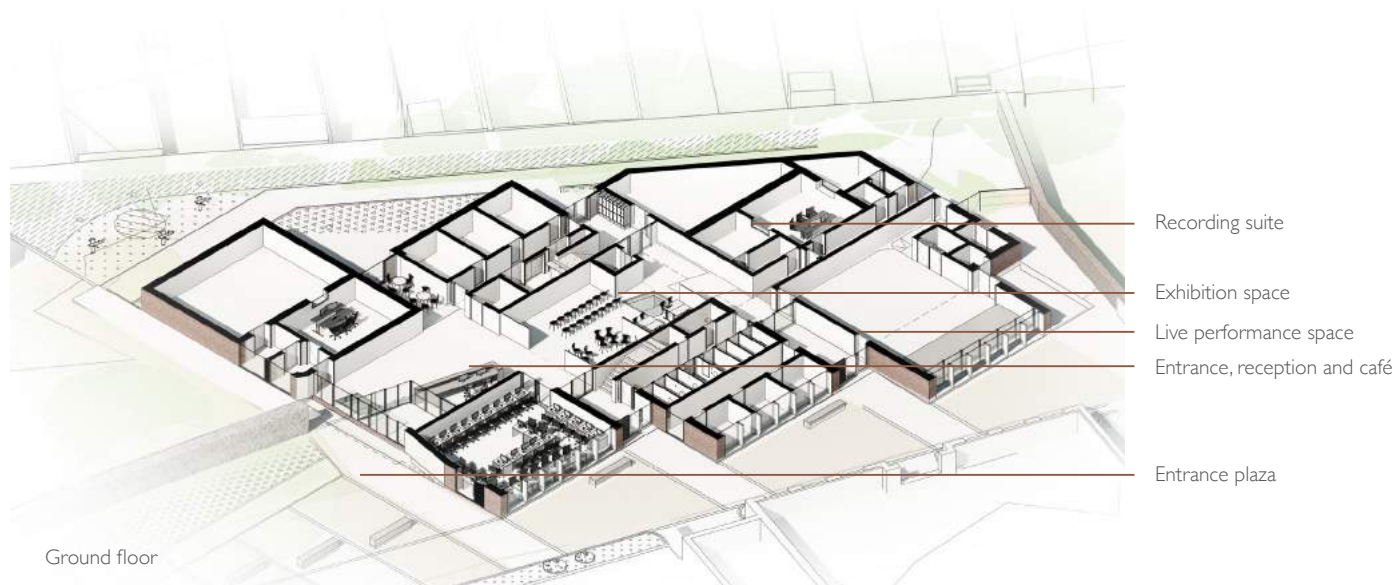
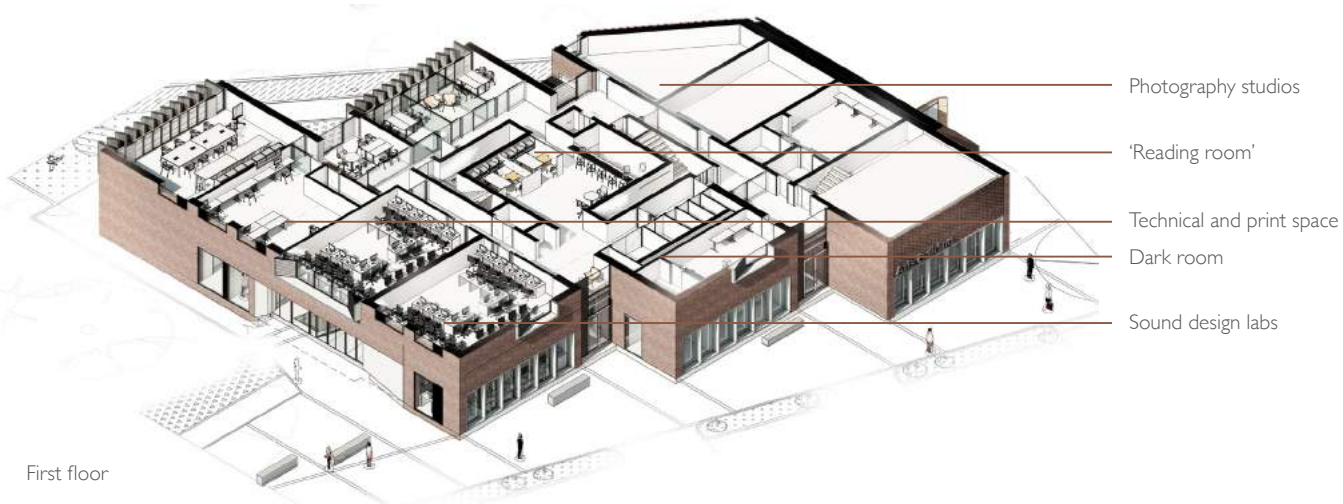
Archaeological remains of special significance lie within the site, some at relatively shallow depth. The building and its associated infrastructure are therefore designed to have as little impact as possible on them. Vestiges of the Abbey precinct wall discovered during preliminary investigations will be revealed and celebrated inside the new building.

In addition, the University, as the custodian of a national monument, is committed to working with neighbours and key stakeholders to ensure that the development of the North Holmes Campus is of the highest quality – one that contributes to Canterbury's valuable heritage and safeguards its archaeological legacy.



*left:* Cross section through the building with the viewing window to the ruins of the Abbey wall beneath

*right:* Archaeological remains of the Abbey wall, uncovered during an evaluation dig in July 2016



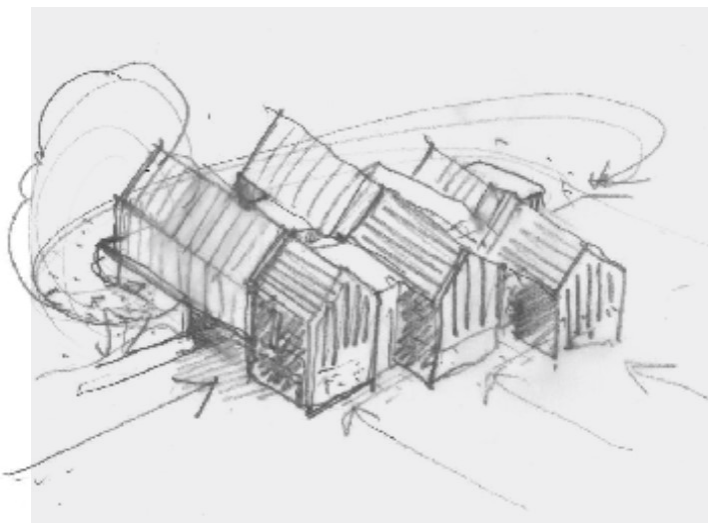
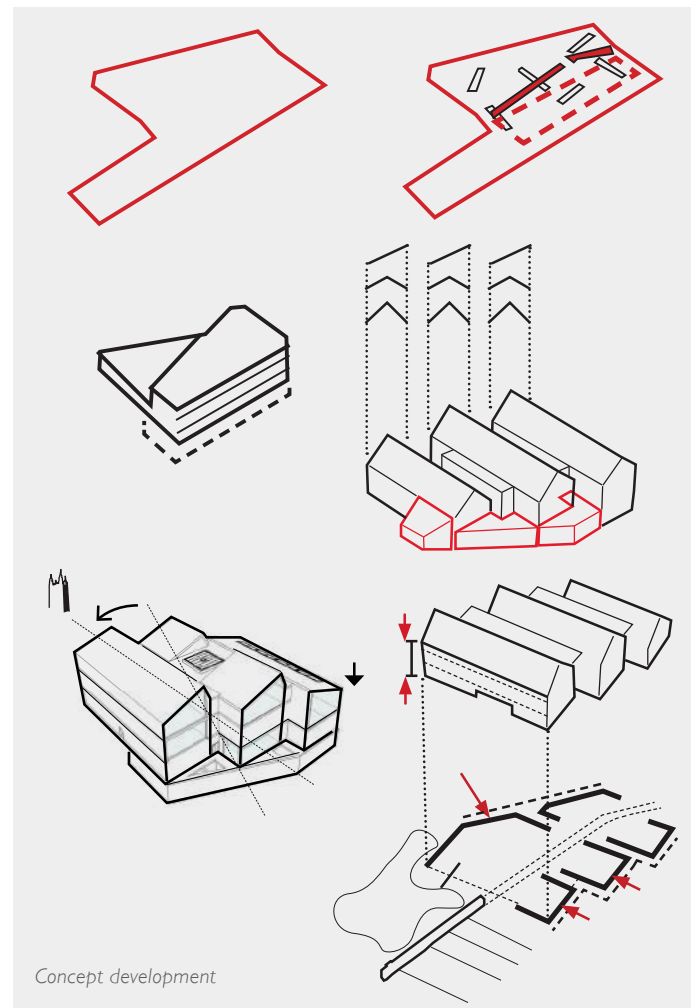


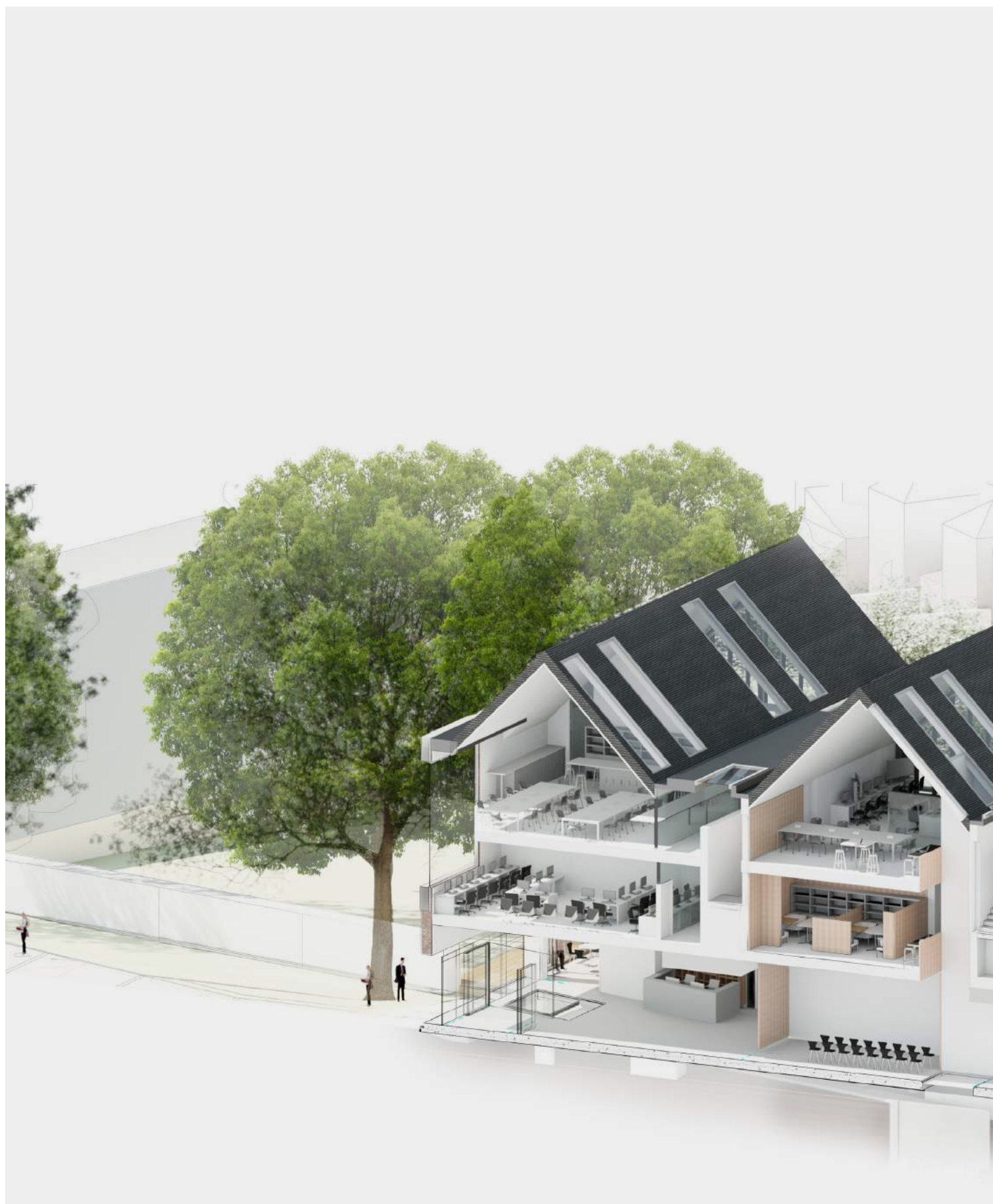
## Massing

The Arts Building will need to provide generous floor to ceiling heights to accommodate high specification photography, studio and performance spaces. These spaces will enable the University to not only meet today's requirements for teaching and learning in the creative arts, but also to incorporate new technologies.

These design drivers have resulted in a critical volume of space required to deliver the curriculum. This space is provided in a building composed of two and three-storey elements, whose scale responds appropriately to the overall setting: between the existing University buildings, residential houses, St Gregory's Centre for Music and the wider World Heritage site.

Because of the sensitive nature of the site, the design incorporates many features to mitigate its impact on neighbours. The façade facing Havelock Street uses fins to direct the view from the building towards the Cathedral and to avoid overlooking. The height and set back of the building has been developed to meet the BRE guidance on daylighting. Activities within the rooms facing neighbouring properties are those that terminate at the end of the teaching day, with any out of hours activity and self-directed study only continuing at ground floor level within the centre of the building and on the less sensitive eastern side.







## Function

A new landscaped plaza guides visitors to the main entrance at ground floor level. A generous foyer, exhibition space and café (opening onto the plaza) will create a lively hub at the heart of the building. Open learning areas will act as a magnet for students pursuing independent study. In addition to the exhibition area, a live music performance space will further showcase student talent and provide the perfect opportunity for engagement with the wider University and the community.

Music facilities are arranged at ground floor level in mechanically ventilated enclosed spaces with 'room in room' construction incorporating high sound insulation levels. Studio and workshop spaces enjoy the roof volume of the upper floors, where excellent north light is introduced through a series of rooflights.







## Materials and sustainability

The three main volumes are clad in a red/ brown brick, harmonising in tone and colour with nearby buildings. Window reveals will be articulated using reconstituted stone. A large picture window on the south façade will announce the entrance to the building from the newly landscaped precinct. We have selected more traditional and formal materials on the east side of the building where it sits within the Abbey precinct and combined these with a less formal and more textured elevation on the west façade, which characterises the outer area beyond the precinct wall.

Environmentally the building is designed to achieve a BREEAM 'Excellent' rating, and we are currently assisting the University in exploring the whole-life cost benefit of exceeding that target. Passive measures including building orientation, insulation and natural daylighting have been maximised. Integrated photovoltaic solar cells are proposed for the southern roof slopes.



Client:  
**Canterbury Christ Church University**

---

M&E:  
Max Fordham

Structural engineers:  
Integral Engineering Design

Planning:  
BDP

Project manager:  
Pellings

Landscape architects:  
Fabrik

Acoustic consultant:  
Sandy Brown Associates

Fire engineers:  
The Fire Surgery

Archaeology:  
Canterbury Archaeological Trust

Cost consultant:  
Currie & Bown

Nicholas Hare **Architects**

---

3 Barnsbury Square London NI 1JL  
020 7619 1670  
[info@nicholashare.co.uk](mailto:info@nicholashare.co.uk)